
168 Deepwater Road Castle Cove Report

By Sean Liu



JUNE 14, 2024

168 Deepwater Road, Castle Cove

Contents

1. Background and Introduction.....	2
2. The outside environment of 168 Deepwater Road	2
3. The land shape and road shape.....	5
3.1 The view of land position in 5km base	5
3.2 The view of land position in 500m base	6
3.3 The view of land shape.....	6
4. Floor plan and the eight diagram examination	6
4.1 The Whole internal building and Fengshui feature	7
4.2 The Ground Floor and Fengshui feature.....	12
4.3 First Floor and Fengshui feature	15

1. Background and Introduction

Feng Shui, also called Chinese geomancy, is an ancient Chinese traditional practice that claims to use energy (Qi) forces to harmonize individuals with their surrounding environment. The term "Feng Shui" literally means "wind-water." It is deeply connected to the concept of Yin and Yang, where Yin represents negative aspects such as the moon, night, women, blood, water, or anything with a nature of shape, downwards, or heaviness. In contrast, Yang represents positive aspects such as the sun, day, men, spirit, wind, fire, or anything light, or having a nature of spirit.

To assess a house's Feng Shui is to examine the Yin and Yang of each direction and their balance. The philosophies behind Feng Shui revolve around this Yin-Yang balance. Achieving a balanced Yin and Yang is difficult to prove scientifically, like Hume's dilemma about whether what the eyes see is exactly what the brain perceives.

In the view of a Feng Shui examiner, the Yin-Yang balance of a place affects the human subconscious. The subconscious directs our mind, and the mind directs our body and actions. For instance, we might feel good or bad about an advertisement on the street without knowing why. A Feng Shui examiner might attribute this to the advertisement appealing to our subconscious, making it happy. A clear subconscious leads to right decisions, while a fearful subconscious induces fear.

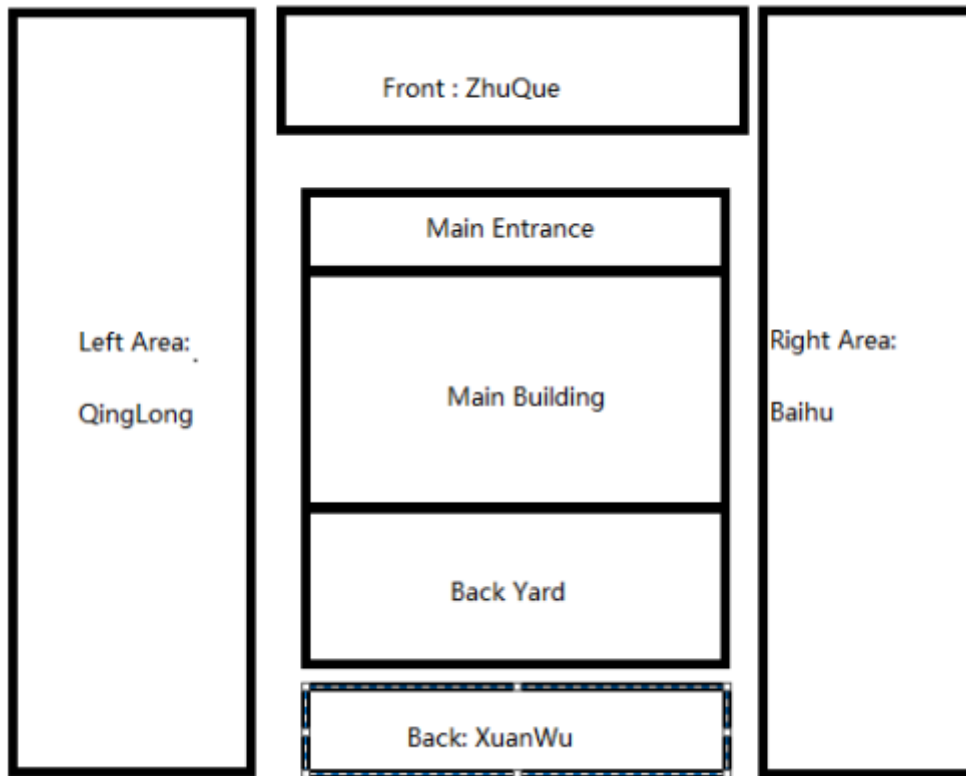
Feng Shui is thus a tool to examine how the external environment influences the internal environment. Several factors interact with Feng Shui, such as 'BAZI' (a composition of the subconscious that determines a person's strength). A strong subconscious is less influenced by Feng Shui, whereas a weak subconscious may have strong reactions to Feng Shui.

This report examines the house itself without involving the owner's characteristics. Good Feng Shui can boost the owner's energy but is not determinative, as 'BAZI' is another influential factor.

2. The outside environment of 168 Deepwater Road

The below diagrams give an example how to check a house's SiXiang Diagram,

which describes the outside environment of a house.



In Feng Shui theory, when standing in front of the house and facing outside: The left side is called 'Qin Long' or the dragon position. In this position, it is desirable to see higher trees, taller buildings, higher mountains, or some large structures embracing the house. If the dragon side is in good shape, it implies that the house may bring good luck to its inhabitants, fostering good social relationships and financial fortune.

The right side is called 'Bai Hu' or the white tiger position. In this position, it is preferable to see lower structures, emptiness, or tranquility, ideally lower than the house itself. The white tiger position is considered fierce in Feng Shui. If it is not in a favorable shape, it can negatively impact the female inhabitants, leading to health issues, bloodshed, financial loss, or moodiness.

The front area is called 'Zhu Que' or the phoenix position. Here, it is preferable to see floating elements, an open view, tidiness, and aesthetically pleasing surroundings. Zhu Que represents the career of the house's inhabitants and also affects their heart, blood, and eye health.

The back area is called 'Xuan Wu' or the sacred turtle position. This area should ideally have higher buildings, trees, or land elevation compared to the

entrance, or a building that is wider than the entrance. If the Xuan Wu side is in good shape, it signifies good circulation of people in the house and strong family support for the inhabitants.

Below is the land shape and building front of 168 deepwater road



Phoenix position: The residence at number 168 has a Zhuque position that faces a relatively straight road. Although the road is quiet, there is some traffic. In front of the house is a bay. The Zhuque position faces the water but does not have a direct view of it. This indicates that the owner of the house has good literary talent and possesses artistic qualities and cultural depth.

Dragon position: this is the left building of this house which provide a solid and strong support, show in above this is a uphill on dragon position which is very likely to see in the opinion of fengshui.

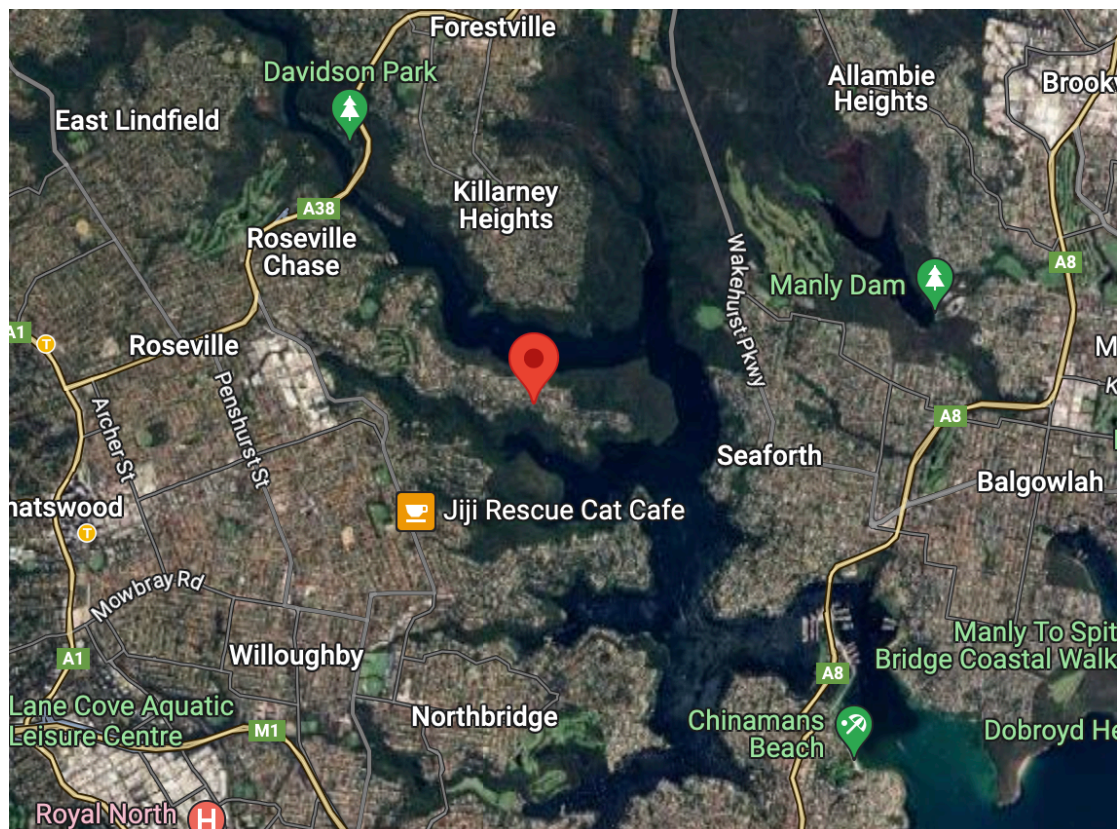
Tiger position, this is the right of the building its downhill and next to a building which is not higher and longer than this house, which is very good in terms of fengshui opinion.

Turtle position, this position is higher than the house which implication the turtle can provide support to the house and people live inside may get good support from family members.

In summary, the new building's Sixiang outside environment is good to support the house's fengshui, this site meets the good Sixiang view in terms of fengshui opinions.

3. The land shape and road shape

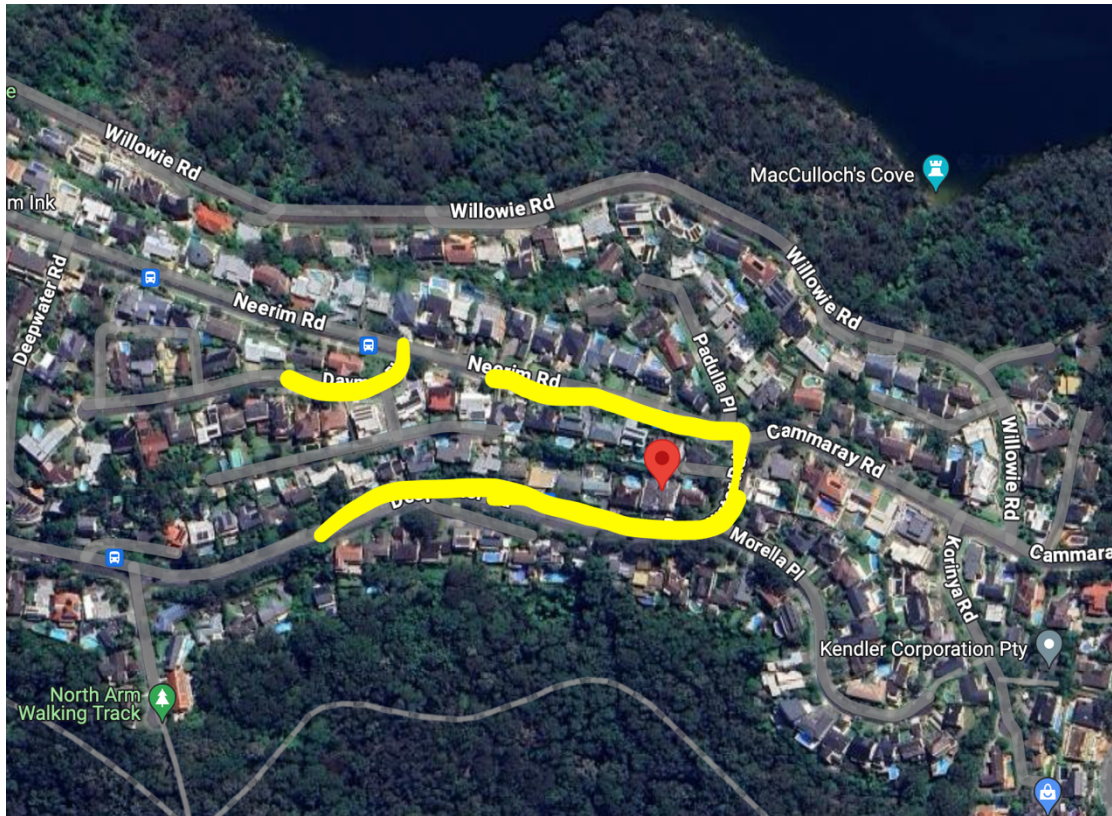
3.1 The view of land position in 5km base



This residence is located halfway up Castle Cove, near the top of the hill. The area faces east, across the river from Seaforth. Seaforth is situated on the extension of the Killarney Heights mountain range, providing excellent mountain energy to the east of the house. In the dialectic of sand and water, this location offers beautiful mountains and flowing water to the east, with

water coming from the northwest. The orientation of this house allows it to fully benefit from the Feng Shui geographical advantages of the area.

3.2 The view of land position in 500m base



From the perspective of the 500-meter environment, the surrounding roads do not form shapes that create negative energy (sha qi) for this residence, such as reverse bows, sharp angles, or direct confrontations. This provides stable Feng Shui support for the foundation of the house.

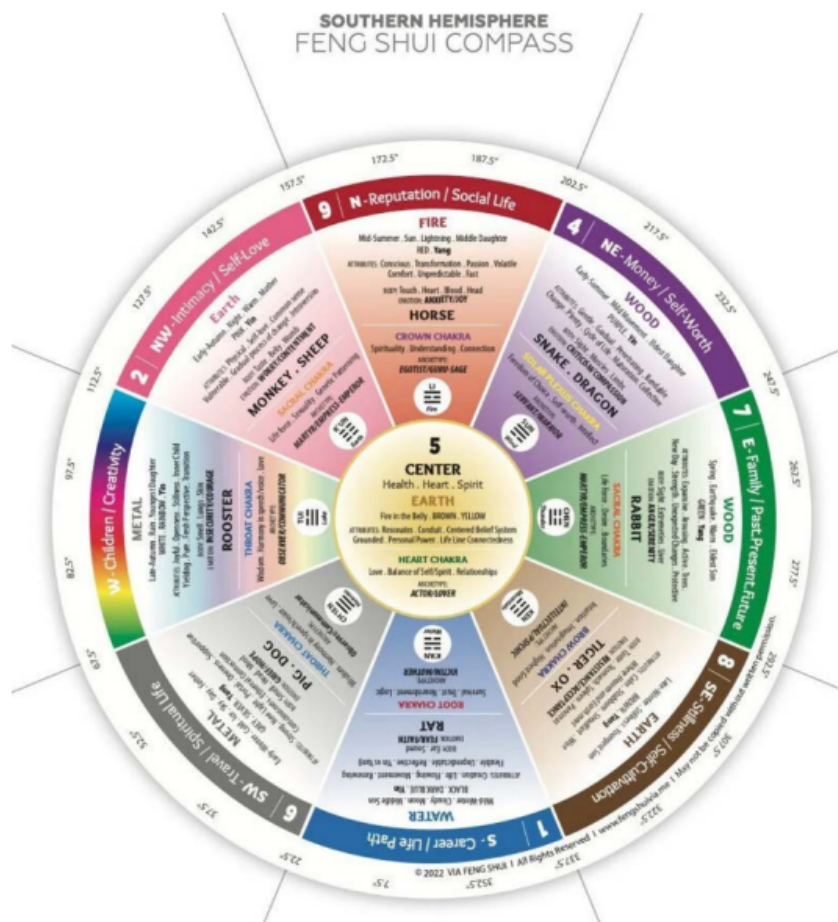
3.3 The view of land shape

The land shape is a quadrilateral with a lower frontage and higher back. According to the book 'Yang Zhai San Yao' by Daoheng Wang (1760-1843, Qing dynasty), such a land shape is beneficial for the health and life stability of the people living there.

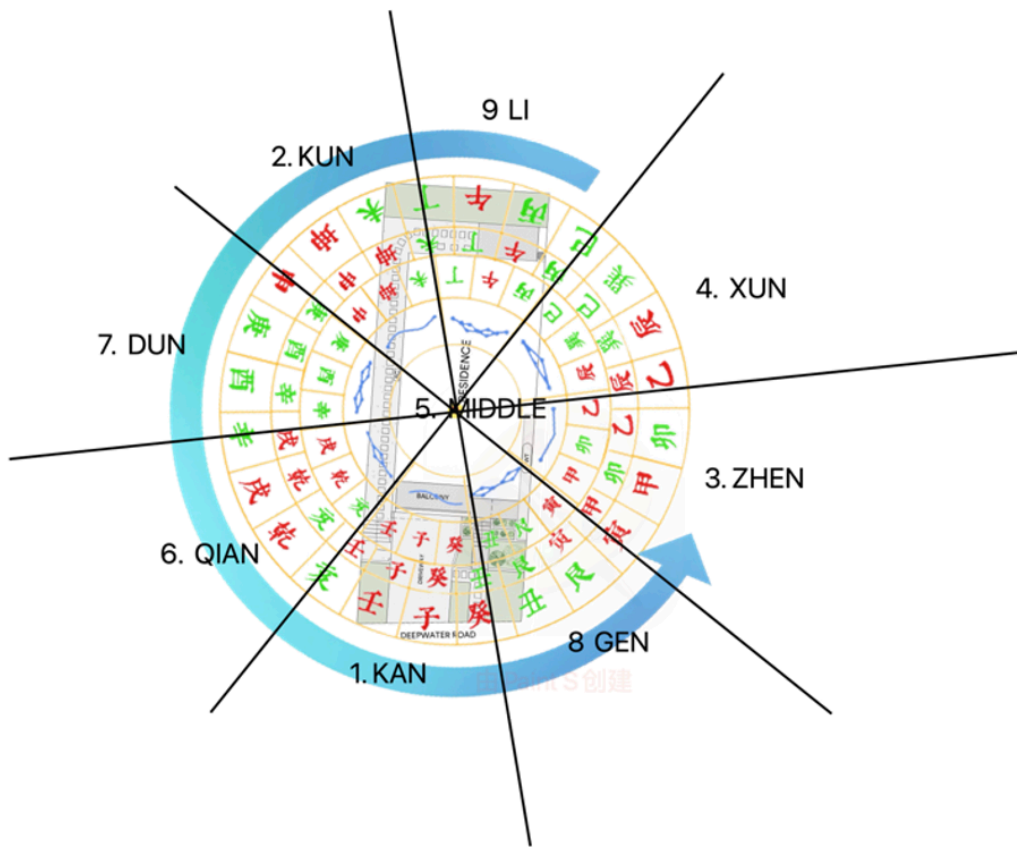
4. Floor plan and the eight diagram examination

The internal environment is represented by the eight diagrams of the Bagua.

The Bagua, or Pakua, are a set of eight symbols that originated in China and are used in Taoist cosmology to represent the fundamental principles of reality, seen as a range of eight interrelated concepts. Each symbol consists of three lines, with each line either "broken" (representing Yin) or "unbroken" (representing Yang), forming binary numbers from 000 to 111, which are equivalent to octal digits 0 to 7. Due to their tripartite structure, these symbols are often referred to as the Eight Trigrams in English. The diagram below shows the Bagua trigrams and each presentation of the trigram. However, it is important to note that this is based on the Northern Hemisphere, and the directions change in the Southern Hemisphere.



4.1 The Whole internal building and Fengshui feature

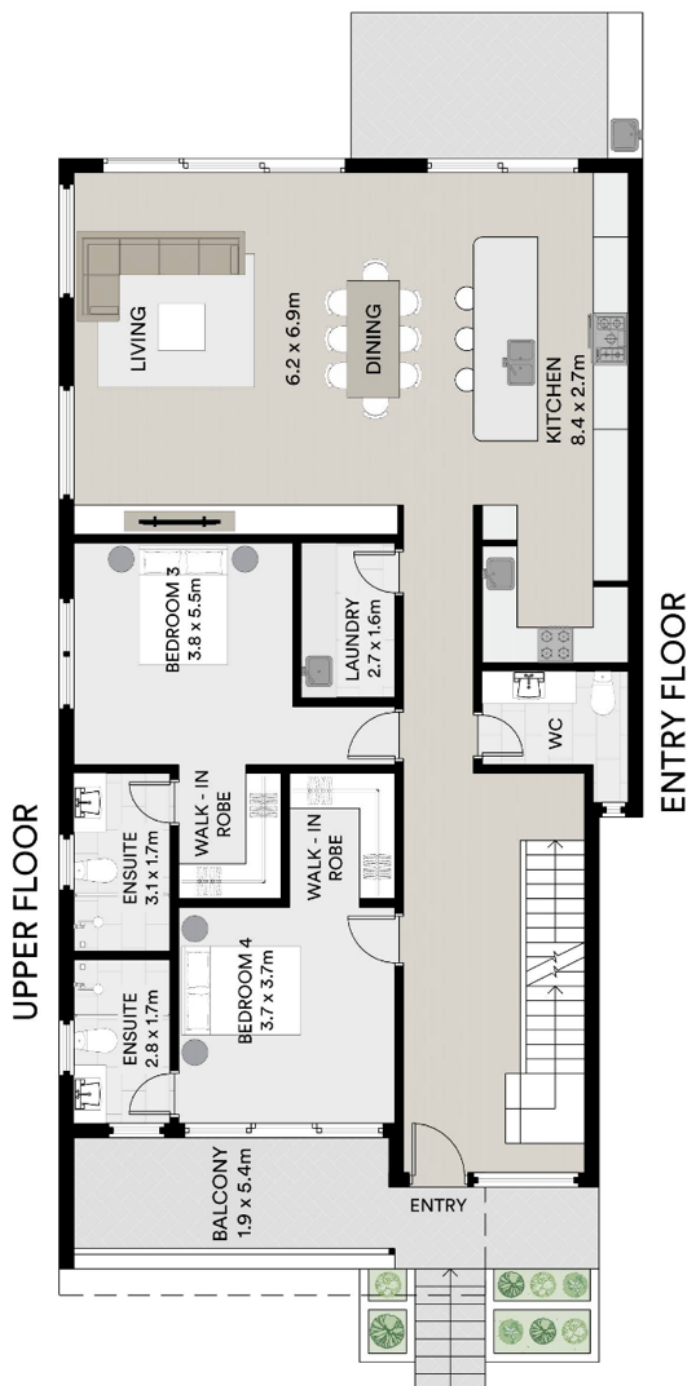


No	Like to see in fengshui opinion	Not like to see in fengshui opinion	What's good What's not	What's conditions now	Recommendation
1 KAN	Like to see higher building or big trees or whatever present 'Yang' in fengshui such as status stones or towers	Not like to see too much 'Ying' building, such as temple, or a long road or a dip or some fast floating things	If too much Ying in this area, in fengshui's point of view, it may cause below consequences (just possibility) <ul style="list-style-type: none"> • Family tensions • Can't save money properly • Accidental damage If a lot of Yang in this area, it will boost the family's career and gain good wealth fortune, but still the men in this house may like to gamble if too much Yang	Out side of this position is a house sit in higher position of the road which presents Yang to this position	Outside environment is good
2 KUN	Like to see higher building or big trees or whatever present 'Yang' in fengshui such as sculpture stones or towers	Not like to see too much 'Ying' building, should not be missing any point	If too much Ying in this area, in fengshui's point of view, it may cause below consequences (just possibility) <ul style="list-style-type: none"> • Missing family members • Can't save money properly • Health issue especially related to body resistance 	Its road and driveway of this house, and presents Ying at this stage.	The external environment being tall and grand is a very good sign.
3 ZHEN	Like to see higher building or big trees or whatever present 'Yang' in fengshui such as status stones or	Not like to see too much 'Ying' building, should not be missing any point	if too much Ying in this area, in fengshui point of view, it may cause below consequences (just possibility) <ul style="list-style-type: none"> • Legal case and issue • People in the house may in arguments • May cause theft If a lot of Yang in this area, it will lead the family to live in peace	Kitchen of this house sit in the position which provide enough Yang, and outside is next to the other	Good for the house

	towers			house	
4 XUN	Like to see higher building or big trees or whatever present 'Yang' in fengshui such as status stones or towers	Not like to see too much 'Ying' building, should not be missing any point	<p>If too much Ying in this area, in fengshui's point of view, it may cause below consequences (just possibility)</p> <ul style="list-style-type: none"> • Legal arguments • May cause theft. <p>If a lot of Yang in this area, it will lead the family to live in peace</p>	Next to the other house leads this position Yang	Good for the house
5 Middle	Middle of the house like to see it's a path or empty area, no bathroom no kitchen	Not like to see bathroom or kitchen or water	<p>5 is the centre point of the house, its like empty or as a foot path.</p> <p>If this area is not empty, it may cause the Qi not floating well in the house</p>	Good	Good for the house
6 QIAN	Like to see Ying, such as lower alfresco space empty, floating things	Not like to see Yang such as higher building or heavy stone or sculpture or BBQ kitchen etc.	<p>If too much Yang in this area, in fengshui's point of view, it may cause below consequences (just possibility)</p> <ul style="list-style-type: none"> • Kids may not have good career • Health issue for elders • Accident or legal issue <p>If a lot of Ying in this area, it will lead the family to live in peace and elders may have longer life especially male</p>	Outside of this position is Yang, depend on the inside of the house, should see floating feature here	Good for the house,

7 DUI	Like to see Ying, such as water, floating things	Not like to see Yang such as higher building or heavy stone or sculpture etc.	<p>If too much Yang in this area, in fengshui's point of view, it may cause below consequences (just possibility)</p> <ul style="list-style-type: none"> • Bad accident or legal cases • Unhappy with family member • Fight or arguments 	Outside this area is driveway and the garage	good
8 GEN	Like to see Ying, such as water, floating things	Not like to see Yang such as higher building or heavy stone or sculpture etc.	<p>If too much Yang in this area, in fengshui's point of view, it may cause below consequences (just possibility)</p> <ul style="list-style-type: none"> • Not save money • May have bad religious - cult • Young couple may not easy to have kids <p>If a lot of Ying in this area, it will lead the family to live in peace and young people in this house smart, quick learner and wisdom</p>	Outside this area is swimming pool which is good	No need much adjustment
9 LI	Like to see Ying, such as water, floating things	Not like to see Yang such as higher building or heavy stone or sculpture etc.	<p>If too much Yang in this area, in fengshui's point of view, it may cause below consequences (just possibility)</p> <ul style="list-style-type: none"> • Refractory disease • May not save money • Eye health issue <p>If a lot of Ying in this area, it will lead the family to live in peace and good fortune of money</p>	Outside is the next building and this position shows too much Yang, need some fengshui decoration	Water feature or even some water plants is recommended in this position in future living

4.2 The Ground Floor and Fengshui feature



Views on the Kitchen:



The kitchen located on the east side of this house. In the Five Elements theory, wood generates fire, and this harmonious relationship is very beneficial for Feng Shui. Since the east represents wood, the kitchen uses fire and water. Burning wood to create fire and using water to nourish wood are complementary relationships. This configuration, known as "Fire Wood Balance" gives a smooth and harmonious feeling, fostering a healthy, harmonious, and diligent family.

The kitchen should be situated in the back half of the house, which is also beneficial for the family's well-being.

Views on the First-Floor Bathroom:



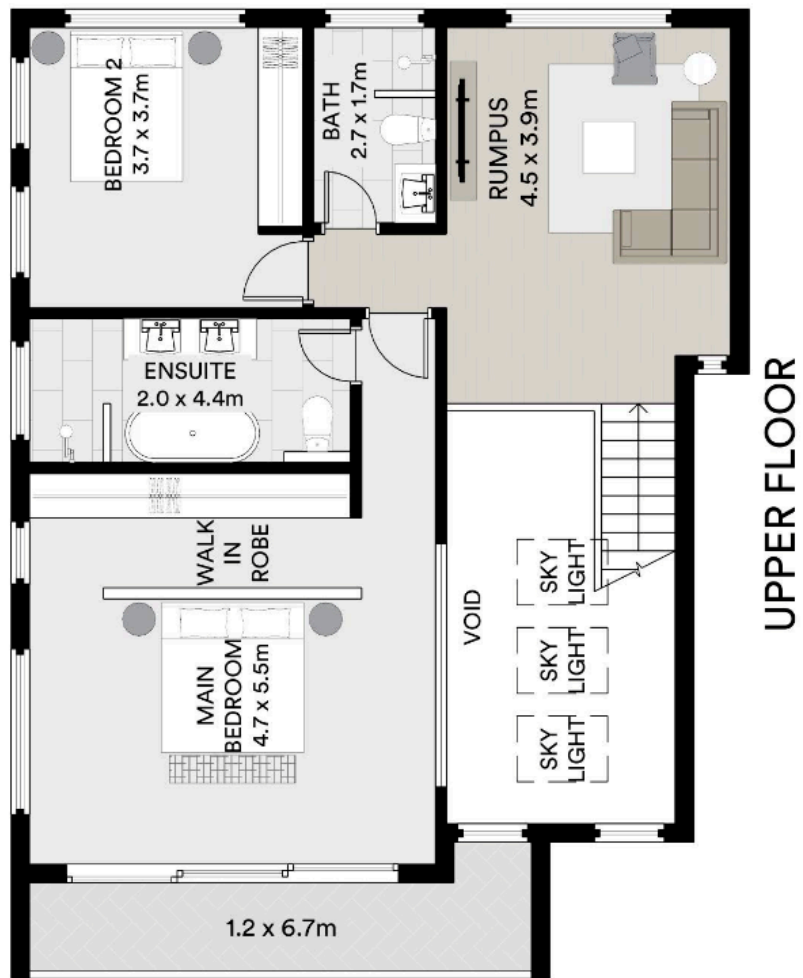
The Five Elements for the west and southwest are metal, which favor the presence of water. The bathroom in this location represents the water element, bringing stability to the house. The west side receives warmth in the afternoon, which helps to remove moisture. This house meets these Feng Shui requirements well.

Feng Shui Views on the Living Room:



The living room is located in the Kun position of the house. The living room corresponds to the earth element (sand), so it is beneficial to place more cabinets and storage here. This setup promotes intelligence and flexibility, which is advantageous for those working in an office. A well-arranged sand shape signifies blessings and longevity and implies support from a wise spouse. These benefits are often observed in the matriarch or eldest daughter of the family.

4.3 First Floor and Fengshui feature





The bathroom is placed on the far west side, and two of the bedrooms receive sunlight from the west, which is beneficial for the growth of children.



There is a small living room on the east side, positioned in the southeast Gen location. This placement is advantageous for the homeowner's career

development. Reading and studying or working in this area will promote a good mood. In Feng Shui, the Gen position is where Yin and Yang interact, symbolizing accumulation and wealth.

Summary

Overall, this house's external four symbols conform to Feng Shui requirements and is situated in an excellent location. It receives Feng Shui energy from surrounding mountains and water bodies. The internal layout is reasonable, with the bathroom, kitchen, bedrooms, and living room all positioned appropriately according to Feng Shui principles. From a Feng Shui perspective, this is an auspicious and suitable residence for living.

Disclaimer statement

The statements below apply to any content such as pages, documents, videos, images, sound files and computer code (the 'Material') created by Tao Metaverse Pty Ltd ('the company') for its services and courses.

Tao Metaverse Pty Ltd disclaims, to the extent permitted by law, all warranties, representations or endorsements, express or implied, with regard to the material including but not limited to, all implied warranties of merchantability, fitness for a particular purpose, or non-infringement.

Tao Metaverse Pty Ltd further does not warrant or accept any liability in relation to the quality, operability or accuracy of the material. The company offers services related to "Bazi", "Six-Yao Prediction", "Fengshui survey of Yangzhai (living house)", "Taoist services", and "I Ching course and Dandao course". The statements and predictions made in these services are based on traditional beliefs and methods, and the accuracy of these predictions cannot be guaranteed. The company is not responsible for any loss, damage, cost or expense incurred by the users of the services, whether direct, indirect, consequential or special, arising from or in connection with the use of the services.

Users of the services will be responsible for making their own assessments and beliefs and should verify all relevant representations, statements and information with their own professional advisers. The company takes no responsibility for the accuracy, currency, reliability and correctness of any information included in the material provided by third parties.

The company takes no responsibility for the accuracy, currency, reliability and correctness of its search facilities, and does not warrant or represent that the search facilities are free from errors or omissions, or that they are exhaustive. The internet is not a secure medium and communications to and from the company may be intercepted or altered in transit. The company does not warrant or represent that its website or any linked sites, are free from anything which may damage any computer used to access the site.

Copyright

Tao Metaverse Pty Ltd respects the intellectual property rights of others and requires that its users do the same. Read more about copyright and when you need to obtain permission to use any material produced by the company.